

The Right Products & Proven Solutions

Every connection matters and at ECL, we know that even the smallest detail can make the biggest difference on site. In this edition of **ECL Connect**, we're shining a light on our Heatshrink Range, exploring how the right choice of insulation and sealing can save time, reduce rework, and extend the life of every installation.

In this edition

- **Product Spotlight**
Full Heatshrink range
- **Industry Standards for Heatshrink**
Key standards to know
Top tips for electrical contractors
- **Answering your questions on Heatshrink**
- **New Product**
- **Product Updates**
- **Behind the Wire**
Meet the team

**CONNECTING AND
SUPPORTING ENERGY!**



Insulation & Sealing Solutions

Protect Every Connection

ECL's Heatshrink range delivers reliability from the inside out. Designed for insulation, sealing, and protection, each product is engineered to suit the environment it's used in – whether bundling conductors, sealing terminations or protecting underground joints.

Contact us today for technical support, product specifications, or to discuss bulk orders.

Heatshrinkable Splice



Manufactured using high-strength polymer and hot-melt adhesive, our heatshrinkable splices deliver durable insulation and moisture protection for copper conductors. Ideal for light-duty and control applications.

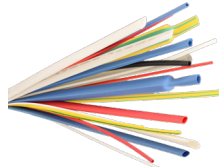
Key Features:

Shrink Ratio: 2:1

Operating Temp: -55°C to 125°C

TOP TIP: Heat evenly from the centre outwards to prevent any voids.

Thin Wall Heatshrink



Flexible tubing with non internal adhesive lining for visual identification and internal bundling. Perfect for use in switchboards and control panels.

Key Features:

Shrink Ratio: 2:1

Operating Temp: -55°C to 125°C

TOP TIP: Always use a controlled heat source to prevent scorching and discolouring.

Heatshrink End Caps



Designed to protect open cable ends from moisture, corrosion and mechanical damage whilst awaiting connection.

Key Features:

Shrink Ratio: 3:1

Operating Temp: -55°C to 110°C

TOP TIP: Always apply heat from the closed end and working towards the open end of the cap.

Dual Wall Glue-Lined Heatshrink

A general-purpose tubing with internal adhesive lining for long-term sealing. Excellent for automotive, industrial, and commercial applications where moisture resistance is essential.

Key Features:

Shrink Ratio: 3:1

Operating Temp: -55°C to 125°C

TOP TIP: Always apply enough heat to allow adhesive flow onto the cable insulation.



Heavy-Duty Protection

Built for Harsh Environments

When moisture, abrasion, or mechanical stress can't be avoided, ECL's heavy-duty heatshrink delivers long-lasting protection. Engineered for harsh conditions, it provides a tough, reliable seal with exceptional mechanical strength for industrial, utility, and infrastructure applications.



Scan the QR code to explore our Heatshrink range online!

Heavy Wall Glue-Lined Heatshrink



Designed for outdoor and underground cable joints. The thick recovered wall and internal adhesive provide superior mechanical protection and watertight sealing.

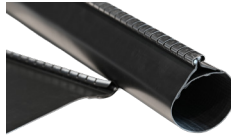
Key Features:

Shrink Ratio: 3:1

Operating Temp: -55°C to 110°C

TOP TIP: Always heat from the centre of the tubing length out towards each end.

Heatshrink Wrap-Around Joints



An easy-to-install repair and sealing solution for existing cables that can't be disconnected. The wrap-around design provides a secure seal repairing damaged insulation.

Key Features:

Shrink Ratio: 3:1

Operating Temp: -55°C to 110°C

TOP TIP: Always remove the internal protective liner prior to shrinking.

Heatshrink Breakout Boots



Provide strain relief and sealing protection for multi-core cable terminations. Flame-retardant and UV-resistant options available.

Key Features:

Shrink Ratio: 3:1

Operating Temp: -55°C to 110°C

TOP TIP: Always heat from the turrets/fingers back towards the main body.

Pressure Relief / Degassing End Caps

Designed with a unique control valve, which safely allows users to gas or degas while maintaining a complete seal.

Key Features:

Shrink Ratio: 3:1

Operating Temp: -55°C to 125°C

TOP TIP: Always use on medium and high-voltage gas filled cables when installing, cutting and re-capping to maintain cable integrity.



Industry Standards for Low Voltage Heatshrink

When it comes to electrical insulation and cable protection, not all heatshrink is created equal. The material composition, wall thickness, and manufacturing standards behind each product determine how it performs in real-world conditions. Understanding the standards that govern heatshrink helps ensure every installation meets safety, performance, and compliance requirements.

Key Standards to Know:

IEC 60684 Series – Electrical Insulating Sleeving

This standard sets the performance expectations for all electrical heatshrink, ensuring the product will shrink evenly, grip tightly, and maintain insulation under stress.

UL 224 / CSA C22.2 No. 198.1 – Flammability and Dielectric Strength


These standards ensure the heatshrink won't ignite or spread flames if exposed to sparks, and that it can handle electrical loads safely without breakdown.

AS/NZS 3000:2018 – Wiring Rules

This standard refers to proper insulation, moisture protection, and mechanical strength at every joint or termination. Using quality heatshrink helps meet these compliance requirements by preventing moisture ingress, corrosion, or potential electrical leakage.

Top Tips for Electrical Contractors:

- ✓ Match wall type to the environment – thin wall for internal areas, glue-lined for outdoor or underground use.
- ✓ Pre-measure before applying heating to prevent shrink-back and gaps.
- ✓ Check product markings for sizing to ensure suitability before installation.
- ✓ Overlap tubing onto cable insulation, a minimum of at least 50mm past connectors or lugs.
- ✓ Use a heat gun rather than an open flame on thin wall heatshrink for consistent results.
- ✓ Use an open feathering flame on glue lined heatshrink to ensure flowing of internal adhesive.
- ✓ Store glue-lined products below 40°C to maintain adhesive quality.



The right product, applied correctly, ensures performance and compliance for the lifetime of the installation.

Got questions? We've got answers.

Our technical team helps contractors daily with product selection and installation advice. That's why we've compiled answers to some of the most common questions we receive. Whether you need product specifications, advice on selecting the right solution, or insights into our services, you can trust our ECL team of trade certified technical staff to provide you with the product advice you need.

If you don't see your question listed, our team is always ready to help - just reach out!

“ **What's the difference between thin wall and glue-lined heatshrink?** ”

Thin wall heatshrink is primarily used for identification, and bundling of conductors. Because it lacks an adhesive lining, it does not seal against moisture or contaminants.

Glue-lined heatshrink, on the other hand, has an internal adhesive that melts during the shrinking process, bonding to the cable's insulation. This makes it ideal for outdoor, underground, or exposed installations where long-term sealing against moisture, dust, and contamination is critical.

“ **Can I layer different types of heatshrink?** ”

Yes! And in many cases, layering is considered best practice.

A common method is to use a glue-lined (dual wall or heavy wall) tube first to provide a moisture seal and mechanical protection, followed by a thin wall tube on top for colour identification.

“ **Is ECL heatshrink flame retardant?** ”

Yes. All ECL heatshrink products are designed to self-extinguish once the heat source is removed, providing an additional layer of protection in high-risk electrical environments. Using flame-retardant heatshrink ensures compliance with AS/NZS 3000 wiring standards and helps maintain safe operating conditions.

Have you got a burning question?

Then send it through to the ECL team at: sales@electricalconnections.co.nz

We can provide technical advice and product specifications to support your commercial, industrial and utility projects.

All-In-One Ferrule Kit

Your tidy termination kit.
For consistent crimps.



Ferrule

Size mm	Colour	Quantity
0.5	White	100
0.75	Grey	100
1.0	Red	100
1.5	Black	100
2.5	Blue	100
4.0	Grey	100
6.0	Yellow	50

- **Complete Solution:** Comes with a self-adjusting crimp tool and 650 ferrules ranging from 0.5mm² to 6mm² - everything you need in one tidy case.
- **Professional Finish:** Designed for clean, consistent crimps on multi-stranded wire - ideal for control panels, switchboards, and fine wire terminations.
- **Fast, Simple & Secure:** The HCDL-16A tool is self-adjusting and ergonomically designed, making crimping fast and reducing operator fatigue.
- **Compact & Organised:** Comes in a durable carry case with individual compartments to make selecting the right ferrule quick and easy.
- **Versatile Range:** Includes 7 sizes of ferrules in different colours to match standard coding and simplify installations on site.



Contact your local wholesaler
today to order your ECL
Ferrule Crimping Tool Kit.

Redefining Performance - New or Improved Solutions

We're always refining our range to bring you the best in performance and reliability. Check out our latest additions and enhancements, designed to make your work easier, faster, and more efficient.



Scan the QR code to check out our full range of products online!

Full Utility range of products

ECL offers a complete range of Utility products available to browse online – designed to support safe, reliable, and efficient power network construction and maintenance.

Our expanded Utility suite includes earthing systems, line hardware, insulators, connectors, clamps, cable protection, and personal safety equipment, all engineered to meet the demands of New Zealand utility standards.



ECL Cable Solutions

Enquire about our range of cable, which includes control, power, and instrumentation cables, along with pre-assembled and custom options to suit complex project requirements.

Leading the way is FlexAL, our innovative flexible aluminium cable solution, independently tested and proven for New Zealand conditions.

ECL provides a more cost-effective alternative for your cable needs. Reach out and let's talk about cable for your next project!



Latest Catalogues Online

The most up-to-date versions of all Electrical Connections catalogues are available on our website.

In addition to the product ranges, each catalogue includes practical best-practice guides and easy reference tables to support correct selection and installation on site.

Scan the QR code above and check it out. Or get in touch with our team and we will pop a catalogue in the post for you.





Meet our Production Team

Every heatshrink product leaving our Nelson facility has been cut, checked, and packed by the skilled hands of our Production and Assembly Team. Their precision ensures every pack meets specification and every order arrives ready for installation.



We make sure every product is the right size, type and fit, because reliability starts before it leaves our warehouse.

– ECL Factory Manager

For the Heatshrink product range, our team delivers precision every step of the way. We will provide heatshrink lengths cut to exact project requirements and packaged for each termination point, eliminating on-site cutting, saving time, and ensuring every piece is ready to install.

GET IN TOUCH TODAY!

+64 (0)3 543 8233

ECL is 100% New Zealand owned and operated and has been trusted in Australasia's electricity sector for over 30 years to deliver reliable, high-quality electrical termination products and cable. It's our people that make the difference in delivering exceptional service! And we are working to your timeline, with reliable electrical solutions, delivered fast - every time.

AUCKLAND | TAURANGA | NELSON | CHRISTCHURCH | SYDNEY | BRISBANE



COME JOIN THE
CONVERSATION!



HEAD OFFICE:
9 Tokomaru Place, Stoke, Nelson,
7011, New Zealand

FREE PHONE 0800 352666
PHONE +64 (0)3 543 8233
sales@electricalconnections.co.nz
www.electricalconnections.co.nz

